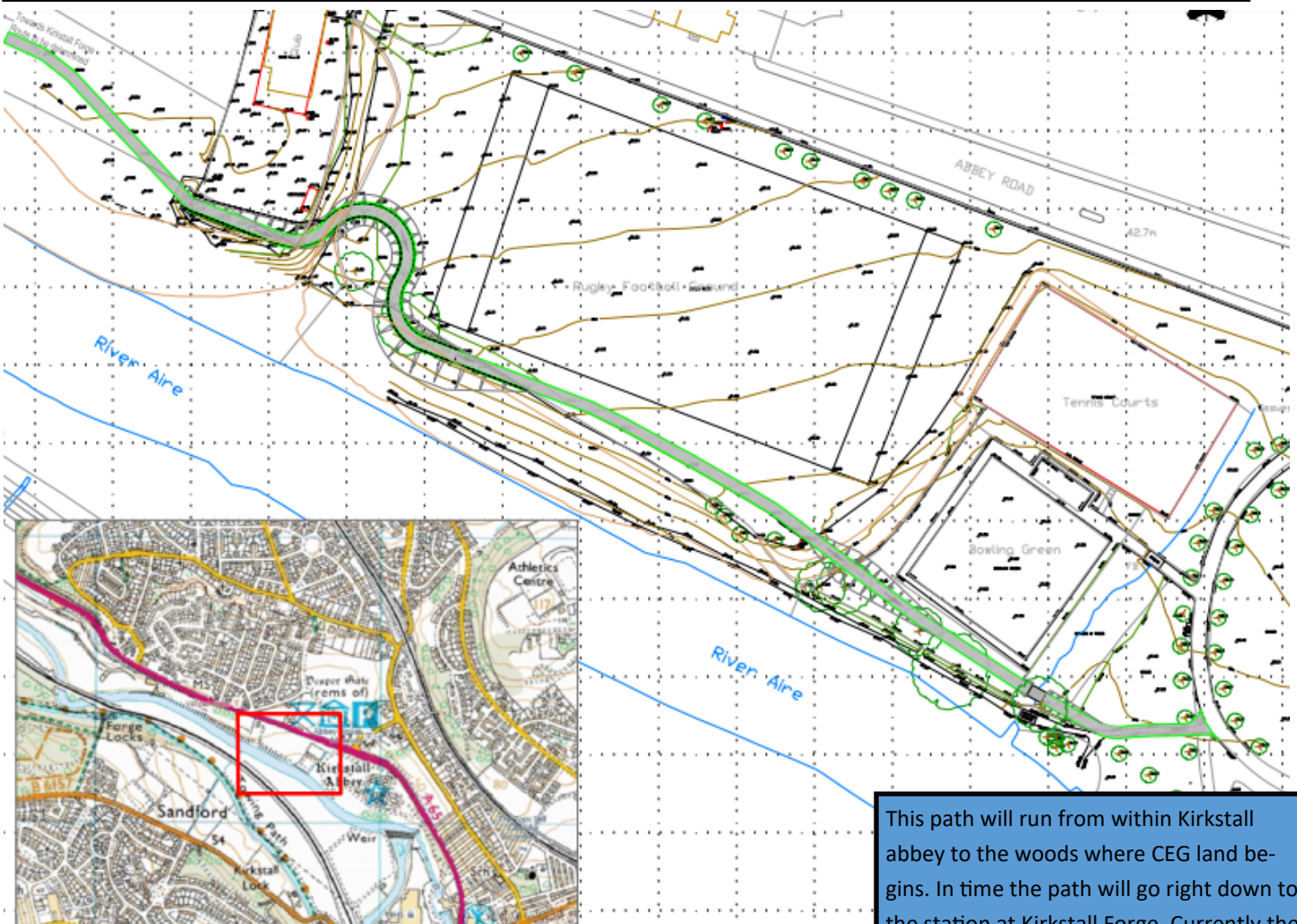


# Kirkstall Abbey to Kirkstall Forge station pathway info sheet

It is proposed to create a new pedestrian and cycle path linking the Kirkstall Forge development with Kirkstall Abbey Park. This is part of a wider aspiration to create a continuous corridor along the River Aire known as Kirkstall Valley Park. The money for this section of the path comes from section 106 money from the Kirkstall Forge development. We have been asked to source the drawings so that they can be viewed by people within the community.



This path will run from within Kirkstall abbey to the woods where CEG land begins. In time the path will go right down to the station at Kirkstall Forge. Currently the plan is to put the path out onto the A65 at some point in the woods. This means that people are safe from harm from the building site and also the path does not lead to 'nowhere'.

The path will join through the woods approximately here

And get back to the waterfront somewhere around here (CIRCLE) (this is a rough drawing not detailed plan so we will find out later exactly where)



## Why is it not consistently right by the river?

## What trees will have to be cut down?

## Why do we need the loop?

## Why do we need earthworks at the corner of the rugby ground?

## Why does the path have to be 3m wide?

The government guidance states that the minimum width of a multi purpose path is 3m. This path will be used by cyclists, walkers and prams and wheelchairs. The guidance also states that with paths that are not up to this standard the first group to suffer is those who are protected by the equality act such as the elderly or disabled. Therefore to ensure fair access to all of our community the 3m is a necessary width for us to maintain. (*LTN 1/12 Shared Use Routes for Pedestrians and Cyclists*)

